



Electric Moist Heating Pad



Introduction

The Relief Pak® Electric Moist Heating Pad is used to provide users with moist heat therapy treatments. This product automatically generates moist heat without added water. When turned on, the heating pad draws in moisture from humidity in the air and keeps the moisture retained in the cotton cover. As the heat rises out of the heating pad, it pushes the moisture out of the cotton cover and onto the user.



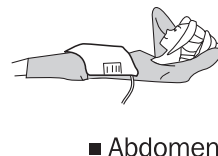
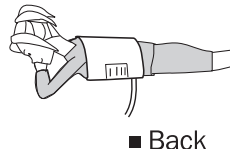
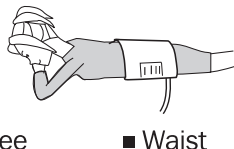
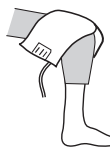
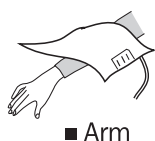
CONSULT INSTRUCTION FOR USE

Relief Pak® Electric Moist Heating Pad

Warning (Read all instructions before use)

1. Please consult with your physician before use of this product, as burns may occur
2. Never use the Relief Pak® Electric Moist Heating Pad **without** a clean cotton cover. Carefully examine cotton cover before each use. Discard and replace cover if any signs of deterioration are shown. Before each use, examine heating pad and discontinue use immediately if pad shows signs of deterioration
3. Unplug heating pad when not in use. Do not position plug where you cannot unplug the device
4. Keep Electric Moist Heating Pad out of reach of children; do not use on an infant
5. This pad is not to be used on an invalid, sleeping or unconscious person or a person with poor blood circulation. Check skin under pad frequently during use
6. For normal treatment, do not use the pad for more than 30 minutes with the high temperature setting, 113 - 167°F (45 - 75°C); Burns may occur regardless of high temperature setting
7. Do not twist or draw out the electric wire, use the cord as a handle, or pull product by its power cord
8. Do not store the unit where it is exposed to direct sunlight, high temperatures, high humidity, dust, etc.
9. Do not use paint thinner or other strong solvents with this product
10. Do not disassemble or modify the unit
11. Do not crush or hit the LCD console
12. Do not use while sleeping, do not sit on or crush pad and do not wet the unit
13. Do not use on areas with sensitive skin
14. Do not use pins or other metallic means to fasten this pad in place
15. Service areas are supposed to be accessed by an authorized, trained person only
16. The patient is the intended OPERATOR of this product
17. Do not service the EQUIPMENT while it is in use
18. The APPLIED PARTS for this EQUIPMENT is considered the Heating Pad with Cotton Cover
19. **EMC Warning:** Use of this EQUIPMENT adjacent to or stacked with other equipment should be avoided because it could result in improper operation
20. **EMC Warning:** Use of accessories, transducers and cables other than those specified or provided by the manufacturer of this equipment could result in increased electromagnetic emission or decreased electromagnetic immunity of this equipment and result in improper operation

Intended Treatment



Product Specifications

Output: Moisture heating
Cover: Cotton & polyester
Display: Numerical LCD (liquid crystal display)
Button: Rubber made in double colors
Sensor: High resolution Digital thermal sensor
Control: Pulse trigger-control solid switched
Circuit: Digital Processor
Protection: Thermal switch
Mode of operation: Continuous operation
Heating: Select 45-75°C (1°C/unit) or 113-167°F (2°F/unit) temperature output
Timer: 1 - 60 minute (1 minute/unit). Auto shut off
Power consumption: **AC 90-130V 40-70Hz**
11-1275 (medium) - 1.1A/145W;
11-1276 (large) - 2.2A/290W;
11-1277 (shoulder/neck) - 1.35A/175W

NOTE: Time/30 min. & Temp./65°C are preset by the manufacturer

Classification

Class II Equipment Type BF Applied Part

Pad Size (L x W): 11-1275 (medium) - 14" x 14" (36 cm x 36 cm)
11-1276 (large) - 14" x 27" (36 cm x 68 cm);
11-1277 (shoulder/neck) - 23" x 20" (58 cm x 50 cm)

Operating condition: Temperature: 68-104°F (20-40°C) Humidity: 30-75%RH
Storage condition: Temperature: 50-122°F (10-50°C) Humidity: 10-90%RH
Transportation condition: Temperature: 14-158°F (-10-70°C) Humidity: 10-90%RH

NOTE: Do not expose the Heating Pad to temperature extremes (below 10°C/50°F or over 50°C/122°F) nor excessive humidity (>90%RH). Equipment is not suitable for use in the presence of a flammable anaesthetic mixture with air, oxygen, or nitrous oxide

NOTE: Recommended atmospheric pressure condition: 700-1060hpa

EMC : IEC60601-1-2
Electrical safety : IEC60601-1

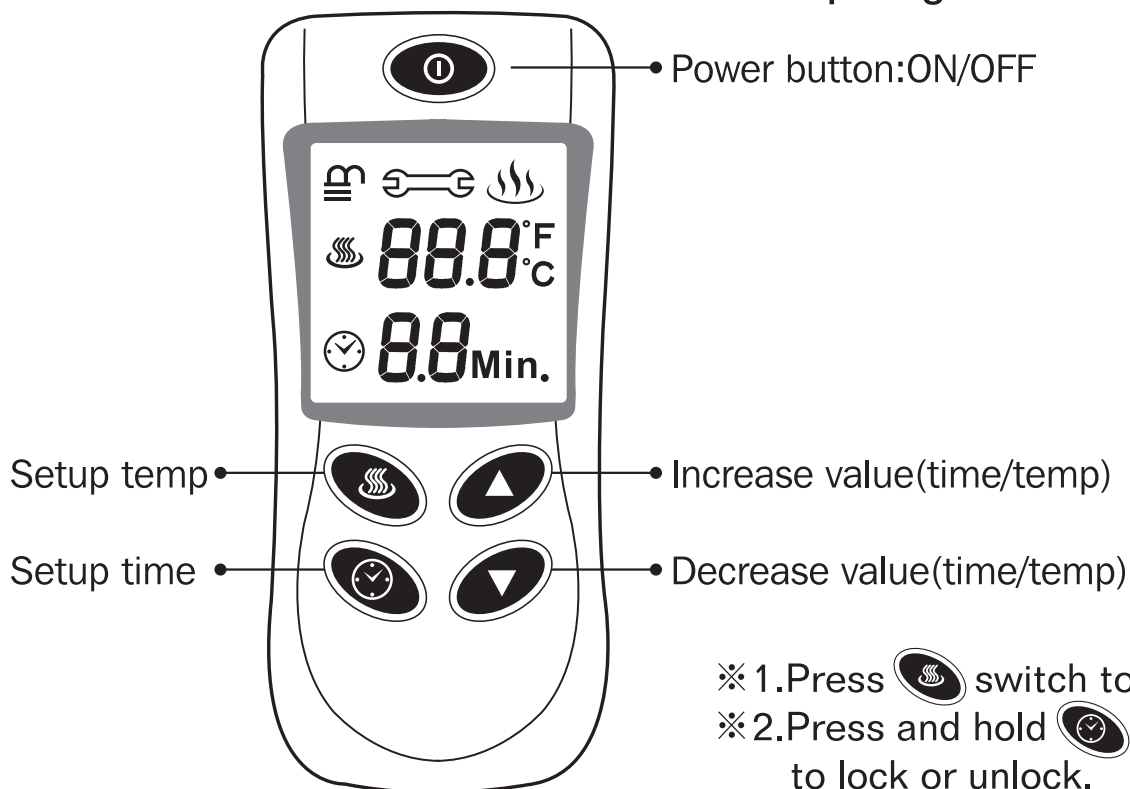
Check for contents: Make sure the cotton cover sheet is included in the package.
If it is missing or damaged, please contact your local dealer.



Button Function

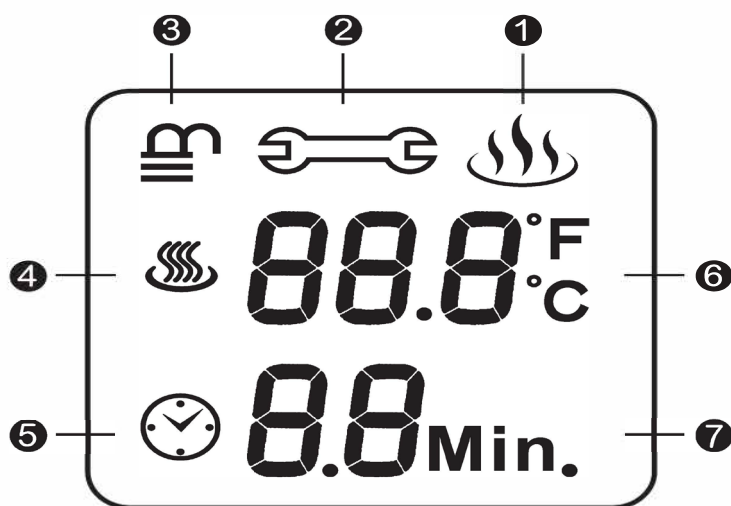
⊙ Time range: 1~60min.

⊙ Temp range: 45~75°C/113~166°F



- ※ 1. Press switch to °C or °F.
- ※ 2. Press and hold 3 seconds to lock or unlock.

LCD Display



Emblem


- ① Heating
- ② Malfunction
- ③ Lock
- ④ Temperature
- ⑤ Time

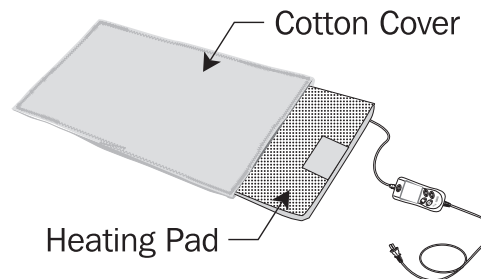
Setup

- ⑥ Real-temp/Setup temperature
- ⑦ Real-time/Setup time



How to use the Relief Pak® Electric Moist Heating Pad

Setting up your Heating Unit for Use


1. Insert the heating pad into the cotton cover sheet.
NOTE: Always make sure the cotton cover is clean
2. Plug the power cord into an outlet
3. Place the heating pad over the area of the body that you wish to treat, making sure the area being treated is free from dirt and sweat
4. Press the on/off button “” to turn on unit (P.1).
The ambient temperature and the last time setting will display on the screen (P.2).




Adjusting the Temperature


1. Press the temp “” button to select the temperature setting. The numbers will flash to indicate they can be adjusted (P.3). Press the temp “” button again to select °F or °C. Press and hold the ^ / v buttons to increase or decrease the heating pad to the desired temperature. The temperature can be adjusted from 113 to 167°F (45 - 75°C).

Adjusting the Time


1. Press the time “” button to select the time. The numbers will flash to indicate they can be adjusted (P.4). Press and hold the ^ / v buttons to increase or decrease the heating pad to the desired treatment time. The time can be adjusted from 1 to 60 minutes.

Saving your Settings

1. Once numbers stop flashing (approximately 5 seconds) after setting temperature and time, the LCD will display real-time of temperature and the time (P.6).
2. Press and hold the time symbol “” for 3 seconds (or until you hear a beep) to lock your settings and prevent them from accidentally being changed during use (P.5).

NOTE: Press and hold the time symbol “” for 3 seconds to unlock the unit to readjust settings

Turning off the Unit

1. After treatment is complete, press the on/off button “” to turn the heating pad off.
NOTE: The unit will also turn off automatically when the selected treatment time has elapsed
2. Unplug the power cord from the outlet
3. Remove the cotton cover sheet and place it in its packaging to keep it clean. The cotton cover sheet is replaceable. Replace it when the cover fails to moisten during treatment or is damaged and/or dirty

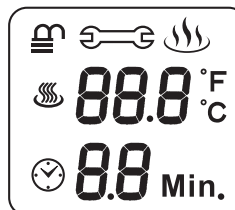
Recommended Treatment Time

1. For normal treatment, 15 minutes on a cycle is sufficient.
Do not use the pad for more than 30 minutes with the high temperature setting

Troubleshooting

1. If malfunction symbol appears, stop use immediately (P.7).
A buzzer will alarm continually for 5 seconds, and heat output will automatically shut off

Power ON



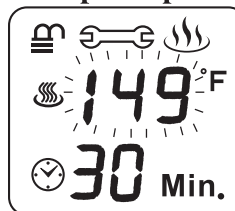
P.1

Image Fig



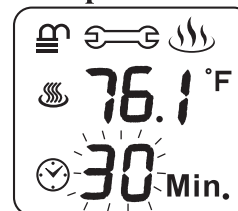
P.2

Setup Temp.



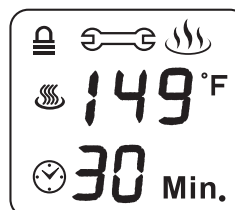
P.3

Setup Time



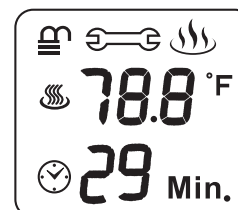
P.4

Lock



P.5

Real-time



P.6

Malfunction



P.7

Cleaning Instructions

Options to Clean Cotton Cover

1. Machine wash using mild soap
2. Hand wash in lukewarm or cold water with a detergent
3. Dry clean

NOTE: Do not bleach! Rinse well short spin! If cotton cover is damaged, please contact your local dealer for a replacement.

How to Clean the Controller Unit

1. Use a soft cloth slightly moistened with water, then lightly wipe the surface

NOTE: Do not use any type of solvent, such as thinner or benzene!

Warranty

Fabrication Enterprises (FEI) warrants that the Relief Pak® Electric Moist Heating Pads are free of defects in material and workmanship under normal use and service for a period of one year from the date of shipment to consumer. If these products fail to function during the one year warranty period due to a defect in material or workmanship, at FEI's option, FEI or the selling dealer will repair or replace this product without charge.

This warranty does not cover installation or labor charges, and does not apply to materials which have been damaged by other causes such as mishandling or improper care or abnormal use. This warranty does not cover:

- Replacement parts or labor furnished by anyone other than FEI, the selling dealer or a certified FEI service agent
- Defects or damage caused by labor furnished by someone other than FEI, the selling dealer or a certified FEI service agent
- Any malfunction or failure in the product caused by product misuse including, but not limited to, the failure to provide reasonable and necessary maintenance or any use that is inconsistent with the Product User Manual

This warranty is in lieu of all other warranties expressed or implied. Product maintenance instructions are issued with each unit, and disregard or non-compliance with these instructions will constitute an abnormal use condition and void the warranty. Please call 800-431-2830 (+1-914-345-9300 Outside U.S.) with questions or for technical assistance.

NOTE: Cotton cover sheet is disposable and excluded from warranty

 **Distributed by:**
FABRICATION ENTERPRISES® INC
PO Box 1500, White Plains, NY 10602 (USA)
tel: 1-914-345-9300 * 800-431-2830
fax: 1-914-345-9800 * 800-634-5370
FabEnt.com